

www.fel.fujitsu.com

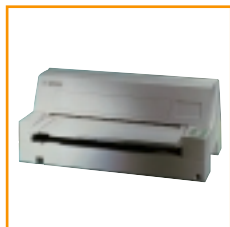


DL9300 / DL9400

24 Wire Dot Matrix Printers

- **Print Technology: Dot Matrix**
- **Printing speed (letter, 10cpi): 100 cps**
- **Printing speed (draft, 10 cpi): 360 cps**
- **Resolution: 360 x 360 dots per inch**
- **Interface (standard): Bi-directional Centronics plus RS232C**
- **Print line: 80 columns (DL9300) 136 columns (DL9400)**





Fujitsu's DL9300 and DL9400 dot matrix printers.

These 267 mm/432 mm wide flat-bed impact printers are a highly suitable solution for multipart continuous forms and cut sheets (max. 8 copies including original), card stock and labels, meeting the full range of teller printing applications. Standard APTC (Automatic Paper Thickness Control) and HCPP (Host Controlled

Paper Path) automatically result in easy and quality print jobs.

One of the quickest flat-bed impact printers, operating at 360 cps (draft quality, 10 cpi) these printers save valuable time in the office. Enhanced paper handling capability ensures flexibility.

DL9300 / DL9400 Specifications

Model	DL9300	DL9400
Print Technology	Dot Matrix	
Printing speed (letter, 10 cpi)	100 characters per second	
Printing speed (draft, 10 cpi)	360 characters per second	
Line feed speed	60 ms at 6 lines per inch	
Form feed speed	6 inches per second	
Resolution	360 x 360 dots per inch	
Number of copies	Max. 8 (including original)	
Command set	Fujitsu DPL24C Plus	
Emulation (standard)	Epson LQ-1170; IBM Proprinter XL24E	
Interface (standard)	Bi-directional Centronics plus RS232C	
Print line (10 cpi)	80 columns	136 columns
Input buffer	Max. 96 KB	
Dimensions (W x D x H)	456 mm x 300 mm x 250 mm	
Weight	12 kg	
Acoustic noise level	54 dBA or less (when printing)	
Head life	300,000,000 strokes (each wire)	
Ribbon life	5,000,000 characters (DQ mode)	
MTBF (Mean Time Between Failures)	8000 hrs at 25% duty cycle	

Specifications are subject to change without notice. For the latest information, contact your local Fujitsu representative.

Fujitsu Europe Limited

Hayes Park Central
Hayes End Road
Hayes Middlesex UB4 8FE
England
Tel: (+44-(0)20) 8573 4444
Fax: (+44-(0)20) 8573 2643
www.fel.fujitsu.com

Fujitsu Italia S.p.A.

Via Nazario Sauro, 38
20099 Sesto San Giovanni (MI)
Italy
Tel: (+39) 0226294.1
Fax: (+39) 0226294.201
www.fis.fujitsu.com

Fujitsu Deutschland GmbH

Frankfurter Ring 211
80807 Munich
Germany
Tel: (+49-(0)89) 32378-0
Fax: (+49-(0)89) 32378-100
www.fdg.fujitsu.com

